

## Firmware Updates

You only need to download the latest updater: it includes the full firmware so it will bring your Zero up-to-date regardless of the version you're updating from.

### 2013-07-22

Download: [OpenDingux Update for GCW Zero](#)

Changes:

- fixed problem where a headphone wouldn't activate if plugged in when an application was already running
- completely turn off sound at minimum volume setting
- reduced pops when starting and stopping audio
- improved file type detection, in particular for data files used by emulators
- fixed problem where powering off the device by holding the power slider for 3 seconds didn't work in some situations
- gmenu2x will pick up new OPK files (uploaded through FTP, for example) without restarting
- the file selector in gmenu2x will accept all files by default
- added clock to bottom bar in gmenu2x

### 2013-07-06

Download: [OpenDingux Update for GCW Zero](#)

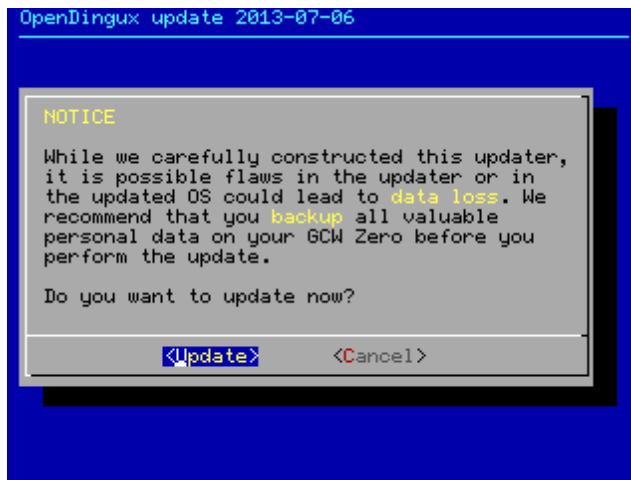
Changes:

- improved video performance (enabled framebuffer caching)
- made vsync more robust (eliminated glitches on page flipping)
- made the FTP server list hidden files (names starting with a dot)
- improved Unicode support in both gmenu2x and command line tools
- fixed bug that powered off the system if the power slider was raised, released, then raised again soon after
- list IP addresses in System Info application
- added unrar command line tool
- added shared memory support (allows more applications to be ported)

### How it works

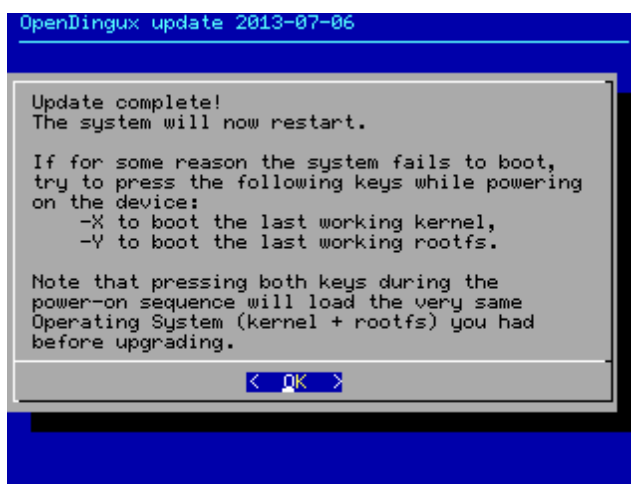
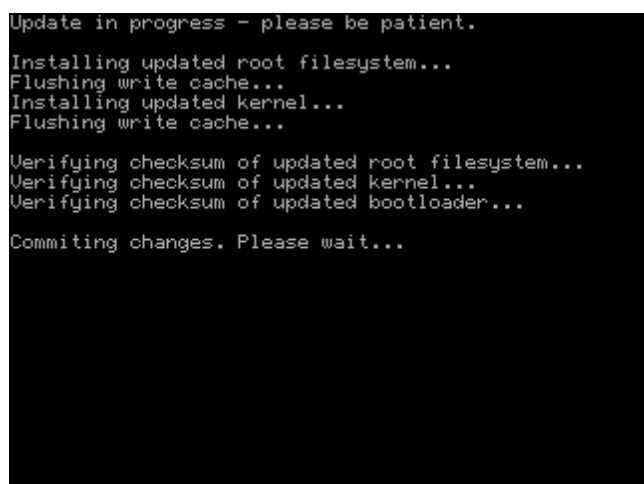
First make sure you have a backup of all valuable user data you have on your GCW Zero, such as save games.

Download the most recent updater application above. Transfer the application (OPK file) to the `apps/` directory on your GCW Zero. Then start the application from the menu:

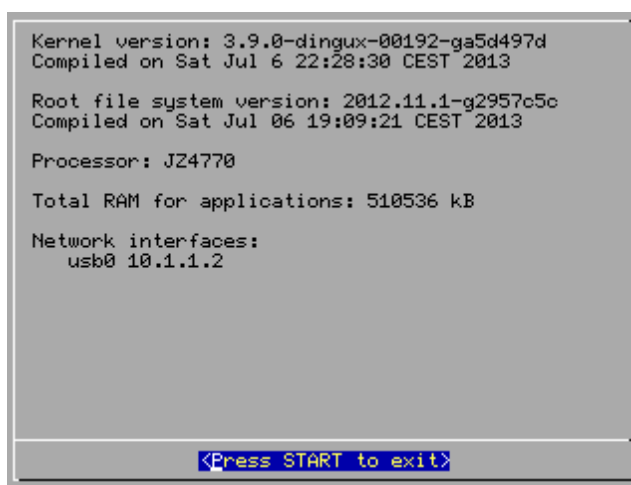


You can select an option with the d-pad and confirm your choice with the START button.

While the update is in progress, you'll see progress information being printed showing what the updater is doing. The update process takes a few minutes, please be patient while it does its work, even if you don't see anything happening for a while on the screen. The output should look like this:



When you press START again, the system will restart. After the restart you can check that the new kernel and rootfs were installed in the System Info application:



The compile date for the kernel and rootfs should be equal to or very close to the date of the updater application.

