

XBOXHDM2 – A QUICK USERS GUIDE

Welcome to this quick 'how-to' guide for running Idotsfan's xboxhdm2 (USB) tool. I assume you are an advanced user and that you are already familiar with xboxhdm. XBoxhdm2 (USB) offers superior performance and flexibility compared to xboxhdm (CD based). Once you get the hang of this, you will not look back.

Follow Idotsfan's main USB building instructions here:
<http://forums.xbox-scene.com/index.php?showtopic=649031>

Please note the command to use the tool properly should be **xboxhd2** in step 5 and 7 of the original post.

Make sure you are using the latest build (xboxhdm2.1 Beta 1) which includes ltools21.lzm (fixes path issues). All current files can be downloaded from here: http://sourceforge.net/project/showfiles.php?group_id=226099&package_id=273563&release_id=680015

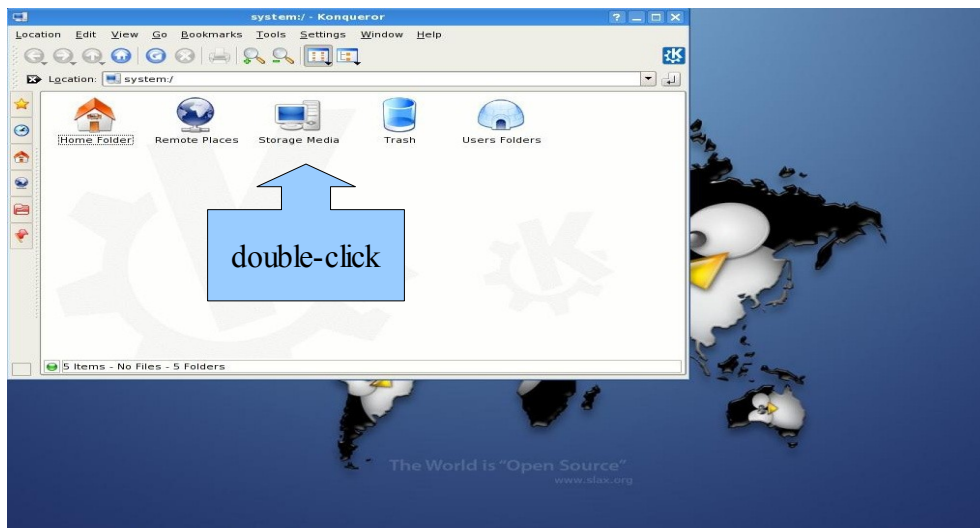
This tool can un/lock your XBOX drive (mainly as long as you have the eeprom). Beware that locked drives will very likely take **>10minutes** to boot. I assume that your hard drive is on the primary IDE channel (hda).

1. Getting started (finding your mount point):

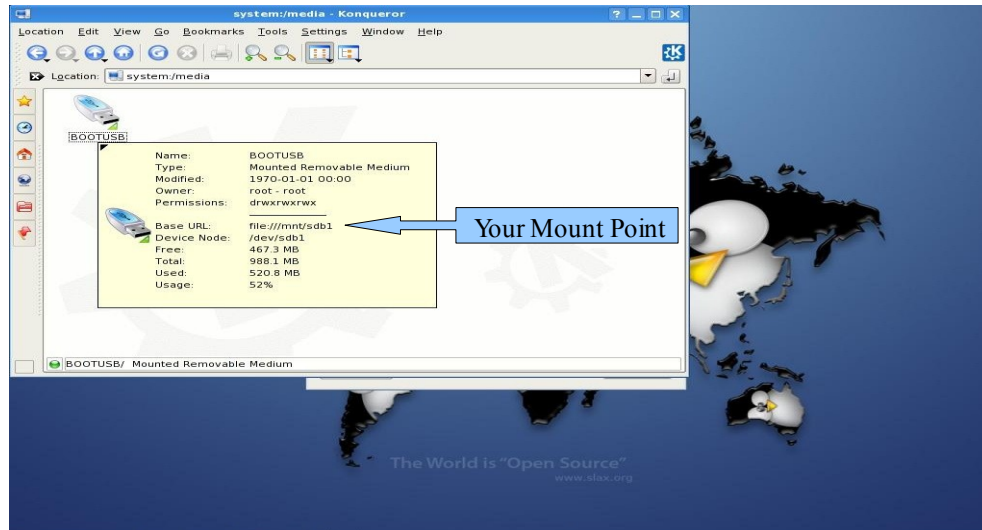
Boot the USB stick and select boot to RAM at the Slax login screen (No 1). You will see the following screen. Double click the system icon (underneath the home icon left off screen).



Now double click the storage media icon:

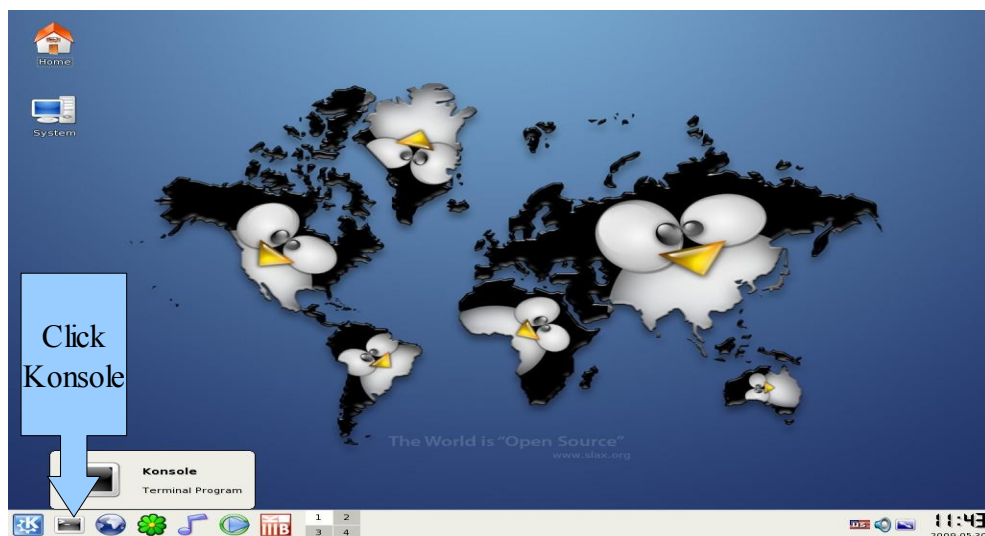


Now hover the mouse pointer over the BOOTUSB icon & note your mount point in the attributes that will pop up (for example - /mnt/sdb1). This is important – so please remember it! You will need it later.

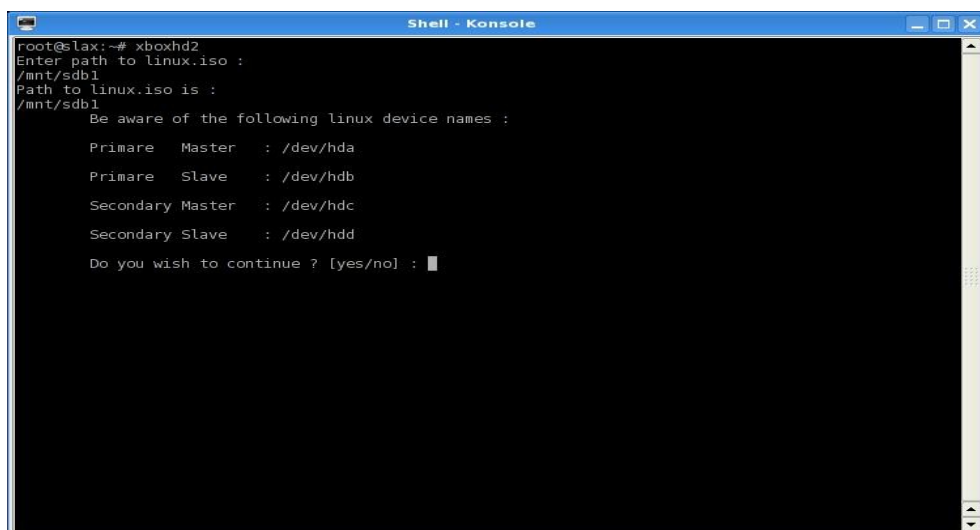


2. Getting xboxhd2 to boot and run.

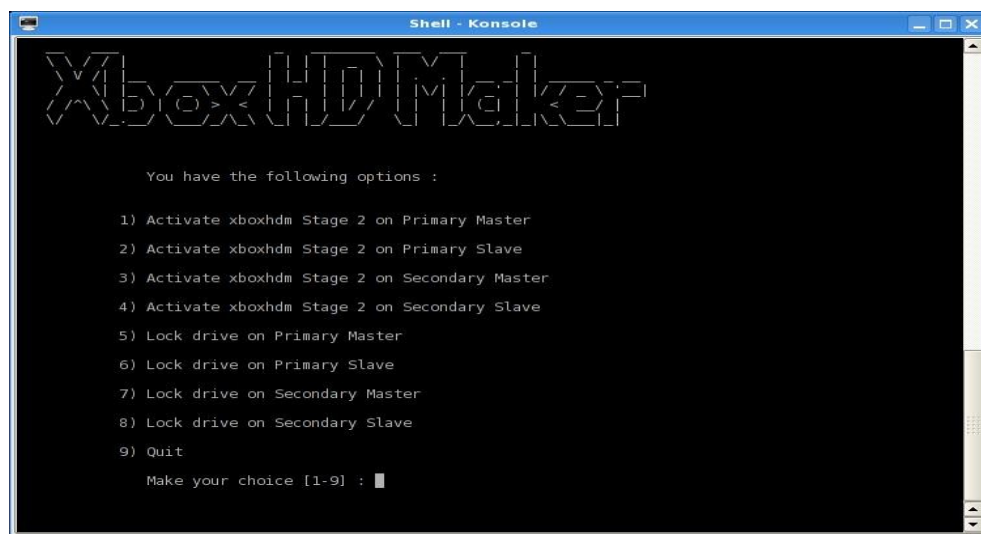
Lets get the Konsole running – click the icon shaped like a monitor on the bottom left tool bar.



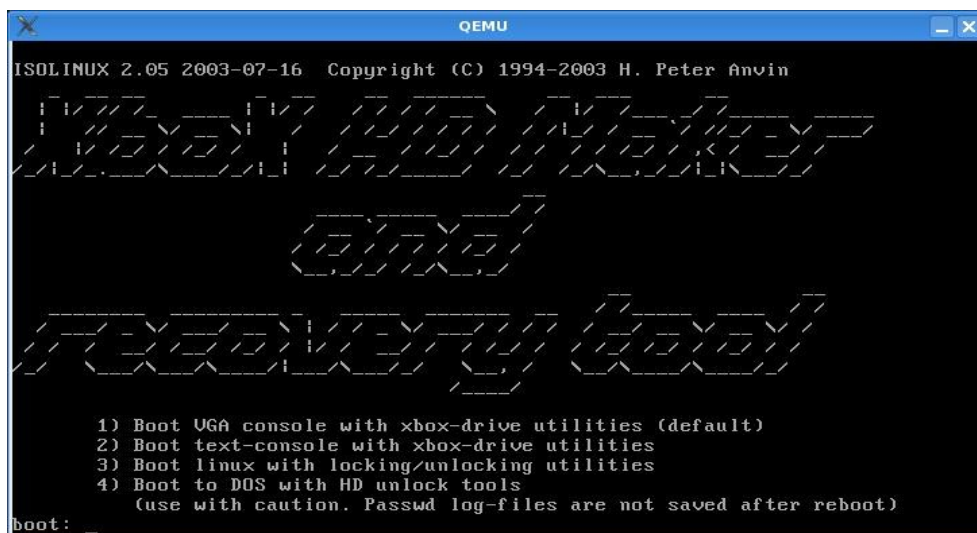
Once the Konsole pops up – type in xboxhd2 - press return. You will be prompted to enter your mount point. Type in (for example) '/mnt/sdb1' (without the quote marks). Press return and type yes to continue.



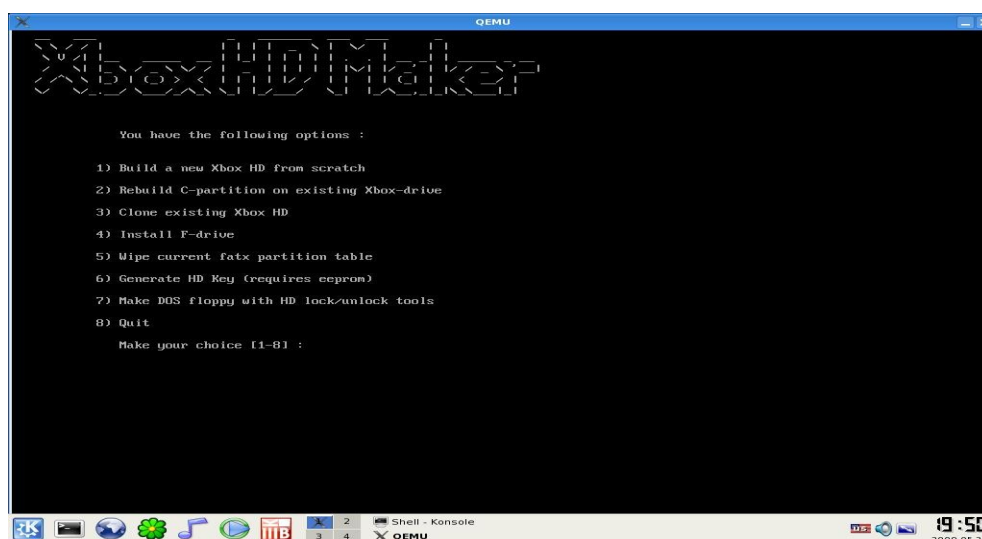
There are 2 main choices now - Run the xboxhdm tool or lock your drive. The main choice here usually will be No 1 (if your hard drive is primary master). So type 1 & press return & answer yes to the following warning - as we are sure we want to use the primary master.



Beginning to look familiar? Select No 1 to run Idots xboxhdm tool but in an emulated form under Qemu.

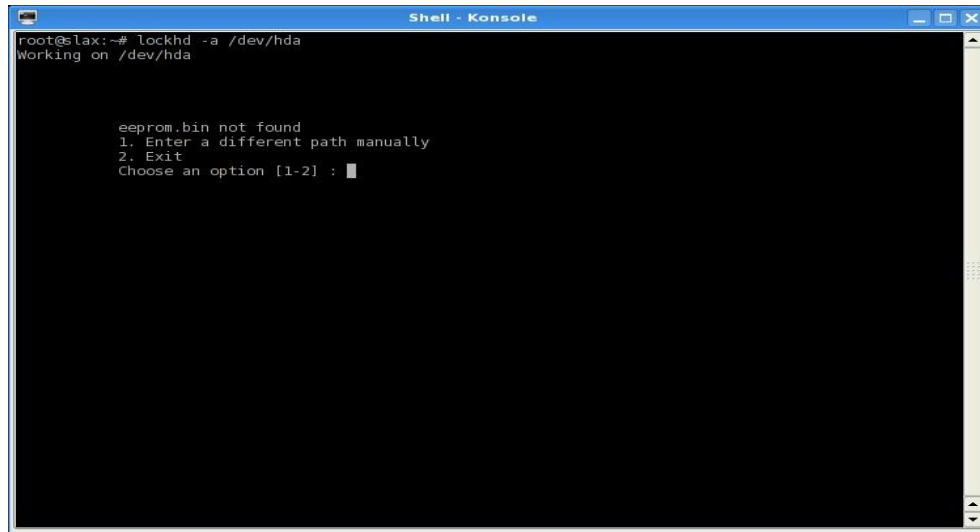


After selecting No1 and noting the standard warnings (that you will be familiar with in your experience on xboxhdm) you will see the familiar main xboxhdm screen. Now go ahead & easily rebuild your Xbox hard drive. See end of document for notes on cloning & DOS tools.



3. Locking your Xbox hard drive.

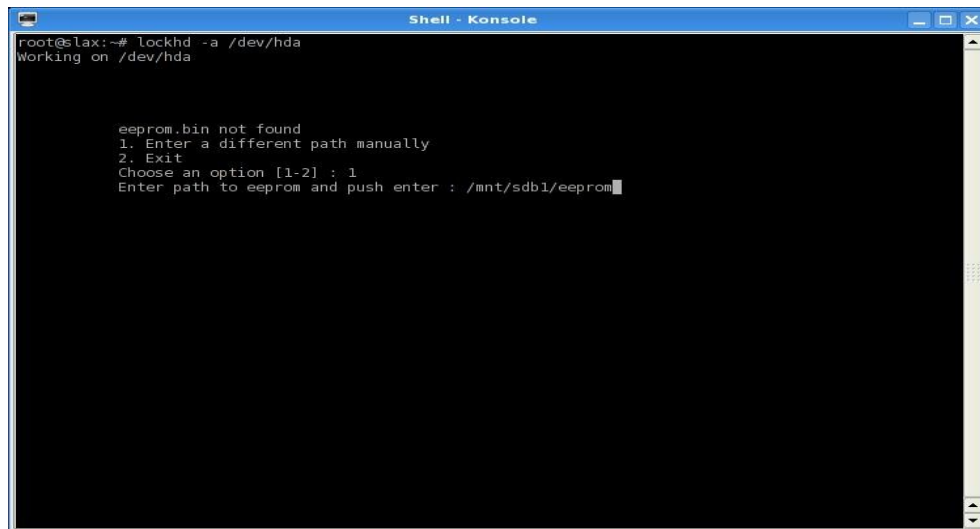
This can be achieved in 2 ways but either way will require you to recall your mount point. Firstly open a Konsole (see section 2). Type in (without the quotes) 'lockhd -a /dev/hda' and press return. Note the warning and select No 1.



```
root@slax:~# lockhd -a /dev/hda
Working on /dev/hda

eeprom.bin not found
1. Enter a different path manually
2. Exit
Choose an option [1-2] : █
```

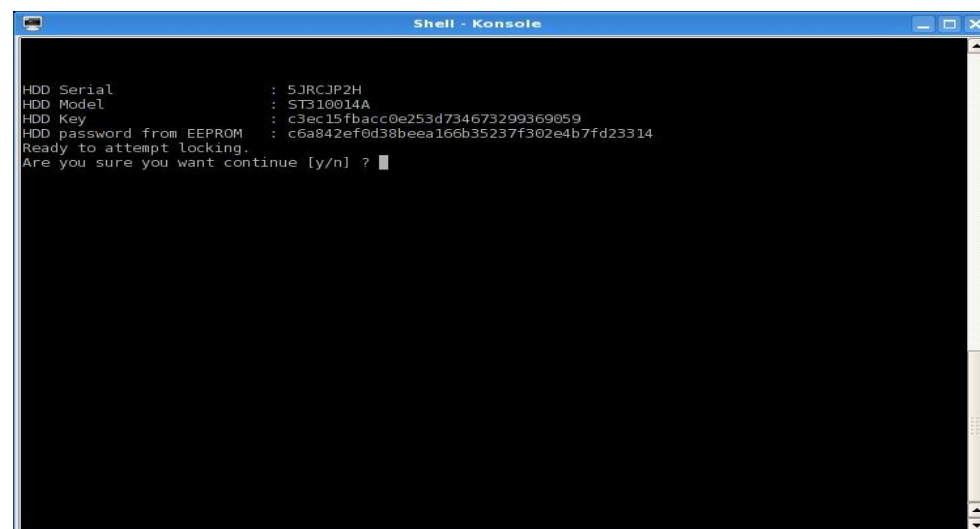
You are now being asked to type in the path to your eeprom. If you have followed Idotsfan's instructions, your eeprom will be located in a folder on the root of your USB drive. Therefore type in your mount point and the location of your eeprom. For example (without the quotes) '/mnt/sdb1/eeprom' and press return.



```
root@slax:~# lockhd -a /dev/hda
Working on /dev/hda

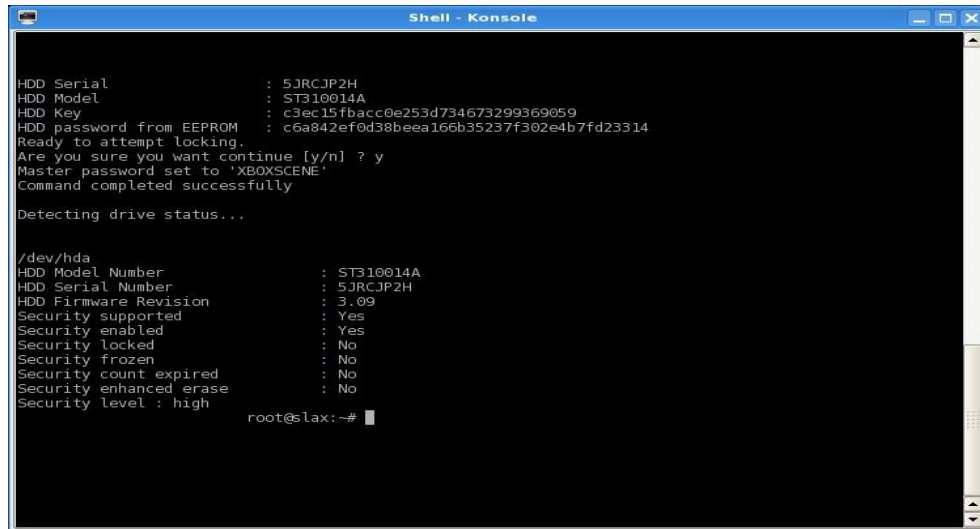
eeprom.bin not found
1. Enter a different path manually
2. Exit
Choose an option [1-2] : 1
Enter path to eeprom and push enter : /mnt/sdb1/eeprom█
```

If successful, an info screen info will appear. Type 'y' (without the quotes) and press return to lock your drive.



```
HDD Serial      : 5JRCJP2H
HDD Model       : ST310014A
HDD Key         : c3ec15fbacc0e253d734673299369059
HDD password from EEPROM : c6a842ef0d38beea166b35237f302e4b7fd23314
Ready to attempt locking.
Are you sure you want continue [y/n] ? █
```

If all goes well, you will see a similar screen appear. Well done - you have locked your Xbox drive.



```
Shell - Konsole

HDD Serial          : 5JRCJP2H
HDD Model           : ST310014A
HDD Key             : c3ec15fbacc0e253d734673299369059
HDD password from EEPROM : c6a842ef0d38beea166b35237f302e4b7fd23314
Ready to attempt locking.
Are you sure you want continue [y/n] ? y
Master password set to 'XBOXSCENE'
Command completed successfully

Detecting drive status...

/dev/hda
HDD Model Number    : ST310014A
HDD Serial Number   : 5JRCJP2H
HDD Firmware Revision : 3.09
Security supported  : Yes
Security enabled    : Yes
Security locked     : No
Security frozen     : No
Security count expired : No
Security enhanced erase : No
Security level : high
root@slax:~#
```

The other way to lock the drive is to follow the instructions at the start of Section 2 (Getting xboxhd2 to boot..) - pause at this screen and look at numbers 5- 8:



```
Shell - Konsole

Xbox HD Maker

You have the following options :

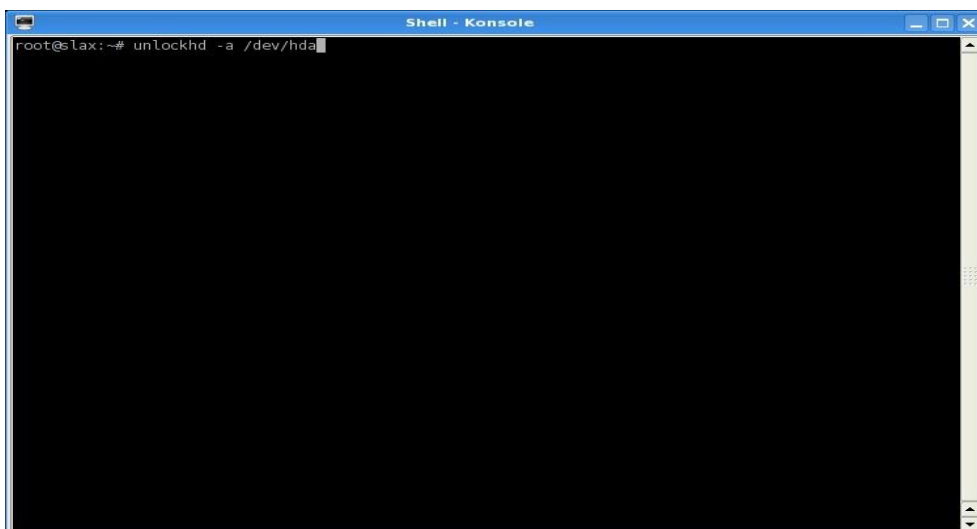
1) Activate xboxhdm Stage 2 on Primary Master
2) Activate xboxhdm Stage 2 on Primary Slave
3) Activate xboxhdm Stage 2 on Secondary Master
4) Activate xboxhdm Stage 2 on Secondary Slave
5) Lock drive on Primary Master
6) Lock drive on Primary Slave
7) Lock drive on Secondary Master
8) Lock drive on Secondary Slave
9) Quit

Make your choice [1-9] :
```

By selecting the appropriate hard drive slot (usually Primary Master) it will take you through the exact same locking steps that we have just gone through. You will still get the same locking result.

4. Unlocking your Xbox hard drive.

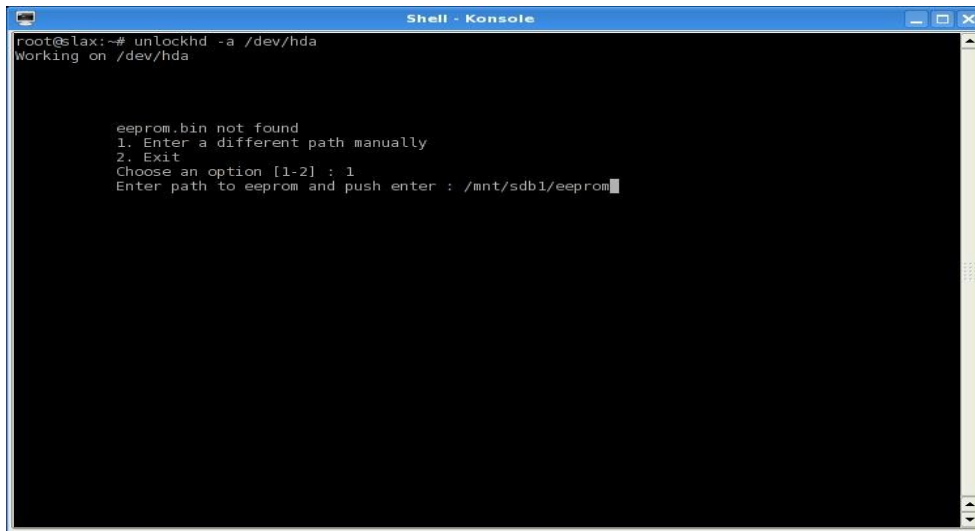
Start a console and Type in (without the quotes) 'unlockhd -a /dev/hda' and press return. Note the warning and select No 1.



```
Shell - Konsole

root@slax:~# unlockhd -a /dev/hda
```

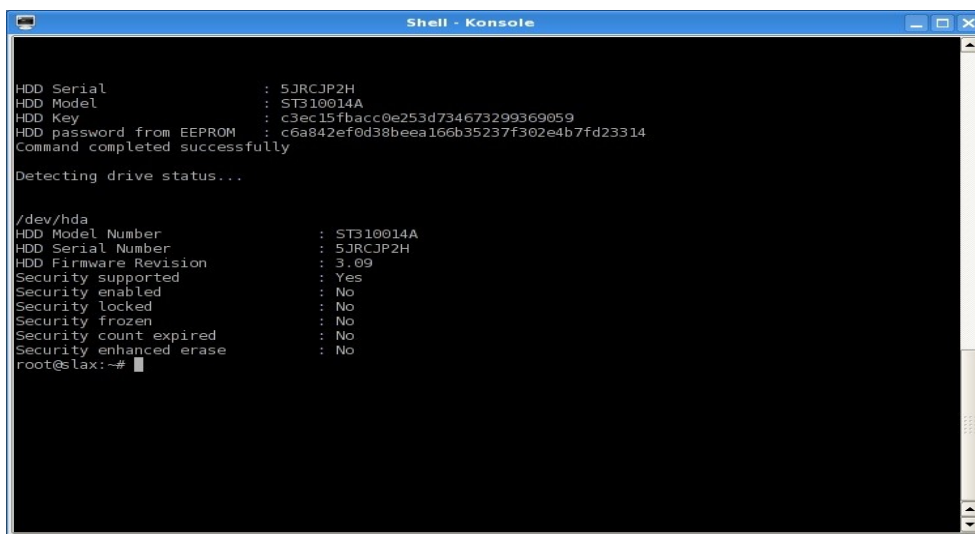
Once again, you are being asked to type in the path to your eeprom. Type in your mount point and the location of your eeprom. For example (without the quotes) '/mnt/sdb1/eeprom' and press return.



```
root@slax:~# unlockhd -a /dev/hda
Working on /dev/hda

eeprom.bin not found
1. Enter a different path manually
2. Exit
Choose an option [1-2] : 1
Enter path to eeprom and push enter : /mnt/sdb1/eeprom
```

Please note - there is no warning for you to confirm whether or not you want to unlock. Once you issue the command, it unlocks automatically. If all goes well, you will see a similar screen appear.



```
HDD Serial          : 5JRCJP2H
HDD Model           : ST310014A
HDD Key             : c3ec15fbacc0e253d734673299369059
HDD password from EEPROM : c6a842ef0d38beea166b35237f302e4b7fd23314
Command completed successfully

Detecting drive status...

/dev/hda
HDD Model Number    : ST310014A
HDD Serial Number   : 5JRCJP2H
HDD Firmware Revision : 3.09
Security supported   : Yes
Security enabled     : No
Security locked      : No
Security frozen      : No
Security count expired : No
Security enhanced erase : No
root@slax:~#
```

Well done - you have unlocked your Xbox drive.

We hope this has been helpful in getting your xbox hard drive the way you want it.

Notes:

Cloning - Cloning of XBOX HDD is supported within xboxhdm2 using the **clonehd** command. Be aware that It remains largely untested.

DOS tools (1) - Idotsfan has made available the FreeDOS tools to un/lock your XBOX HDD. It requires installation on a separate USB stick to run. See post #132 on this thread <http://forums.xbox-scene.com/index.php?showtopic=649031&st=120> for more details.

DOS tools (2) - sculic has made available a dual-boot method to run xboxhdm2 and the FreeDOS tools on one USB stick. See post #152 on this thread <http://forums.xbox-scene.com/index.php?showtopic=649031&st=150> for more details.
