

Evolution Tools Reference Manual v1.0 BETA

<http://www.cyclopsds.com>

Evolution Tools is a PC-side software package for users of CycloDS Evolution. It currently includes the following components:

- **Cheat code editor** – a user friendly GUI application for manipulating CycloDS Evolution cheat code databases. The cheat code editor has some very unique and useful features such as the ability to automatically retrieve the most recent cheat codes directly from the internet and import them into your cheat database.
- **Automatic ROM trimmer** – can automatically trim your ROM files on the PC without any manual interaction required on your part.
- **Enable ROM icons** – display actual ROM icons when browsing files in Windows.

Evolution Tools is designed to run on the Windows operating system, however it is possible to use the cheat code editor with other operating systems such as Linux and Mac OSX by executing it under Wine. For further information please see the official Team Cyclops forums.

Installation

Simply execute the file called '**SetupEvoTools 1.0 BETA2.exe**'. This will launch the installer application which will copy the files into the correct location and create a shortcut in the start menu. Once installed, you may launch the cheat code editor from:

Start Menu -> Evolution Tools -> Cheat Editor

Cheat Code Editor

CycloDS Evolution is designed to work with two separate cheat code databases - the default database which is bundled with each firmware update and the user database which may be freely modified using the PC-side cheat code editor. The user database may contain either codes that you have made yourself, or codes available on the internet. This allows you to always keep your cheat database up-to-date and means that you don't need to rely entirely on the default cheat code database.

The cheat code editor can only operate on the user database, which has the filename 'user.evoCheats'. This file must be placed in the 'CycloDS' directory on your MicroSD card in order to be used. When cheat codes for the same game exist in both databases, CycloDS Evolution will retrieve the cheat codes from the user database only. It does not retrieve codes from both database files and present them all as one merged list.

Importing XML files

The cheat code editor can import cheat codes from XML files in the standard Action Replay format. You can import multiple XML files into the same database, making it possible to create a very large database with codes for every game you desire.

Updating the database from the Internet

The cheat code editor provides a very useful feature, in which it will retrieve the most up-to-date codes from the internet and import them directly into your cheat code database. You may use this function periodically to ensure that your database always contains the most recent codes. To update from the internet, from within the cheat code editor select File -> Update.

Once you have finished editing your cheat code database, please save the file to 'user.evoCheats' and then copy to the 'CycloDS' directory on your MicroSD card.

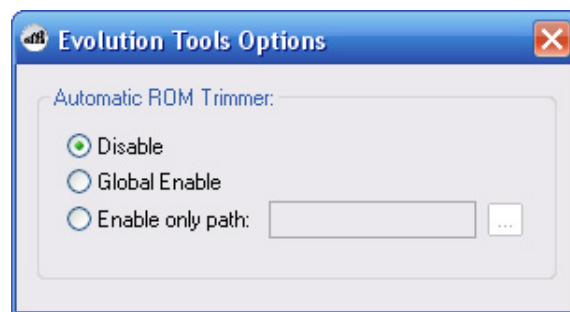
Automatic ROM Trimmer

Trimming ROM files is a process which removes unused data from the ROM files, making them smaller which results in less space being taken up on your MicroSD card. In general, trimming your ROM's will allow you to fit more games on your MicroSD card at one time. Evolution Tools can optionally install a "plugin" into Windows which will automatically trim ROM files as they are viewed in Windows explorer. Automatic trimming can be enabled globally or restricted so that only ROM's contained in a certain location will be trimmed. This behavior is configured through the Evolution Tools Options utility, which may be launched from:

Start Menu -> Evolution Tools -> Options

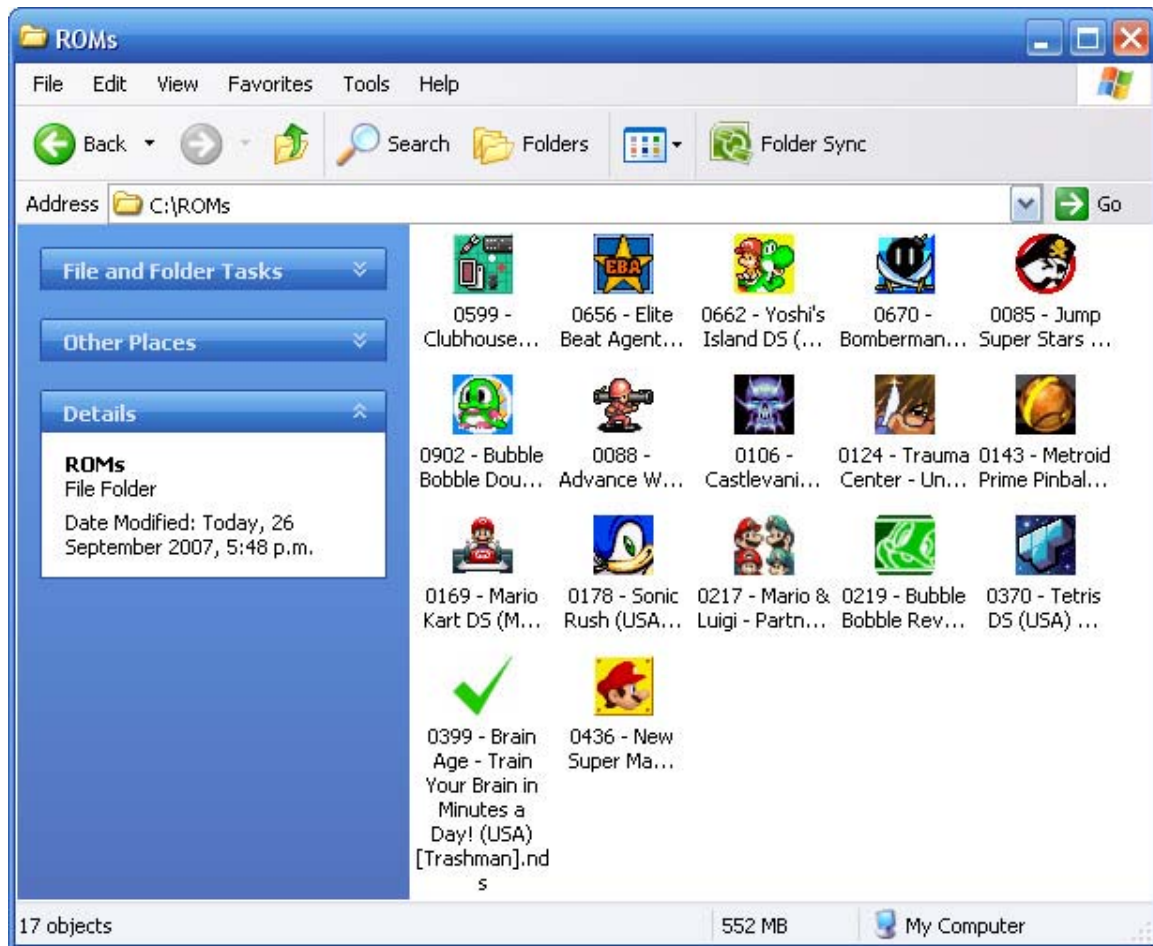
This utility allows you to select one of three options for Automatic trimming configuration:

- **Disable** – automatic trimming is not enabled.
- **Global Enable** – automatic trimming is enabled globally. This means that any time you view an .NDS file in Windows, it will be trimmed if necessary (each file is only trimmed once).
- **Enable only path** – automatic trimming is enabled only for the specified path. For example, you can set the path to point to your MicroSD card. Then when you drag/copy ROM files to your MicroSD card they will be automatically trimmed.



Enable ROM icons

When this feature is enabled, ROM files (with the .NDS extension) will be displayed using the actual icons embedded inside the files. Following is a screenshot to demonstrate this feature:



Additional Information

For more information regarding CycloDS Evolution or Evolution Tools please see the official website or discussion forums:

Website: <http://www.cyclopsds.com>

Forums: <http://www.teamcyclops.com/forum>