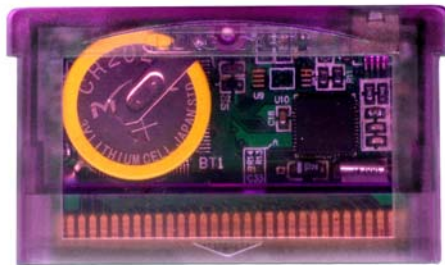


Long Card Manual

1. Long Card

The Long Card is a newly developed device for the GBA and NDS. Just like a Cradle for your Palm or other Handheld Computer, the Long Card is plugged in to the USB port of your PC. Once connected, it can simply send and receive game ROM data from or to the plugged in game or Flash Cartridge.

- 256Mb, 512M or 1G Flash Card
- USB cable



Long Card



USB Cable



Small: Using mini USB connect to PC, Internal USB control chip, no need additional writer and not infract the Nintendo Multiboot patent.

Fast: Ultra fast writing speed. Erase and write full 256Mbit card only need 260 seconds. Using the newest power saving Flashrom, Saving 60% battery energy than other first generation flashcard.

Easy: Internal realtime clock, support all RTC titles .Hardware saver support and we are the first flashcard which hardware support 1Mbit Flash save type.

2. Hardware And Software Installation

2.1. Connect the Long Card to Your Computer

Plug one end of USB cable into the Long Card	Plug one end of USB cable into the USB port in your computer.
	

2.2. Install the Long Card Driver

As any other USB device, when Long Card is connected to the computer, the windows system will response with “Found New Hardware” process. To install the driver , just follow the instruction.

As example, the following shows the Long Card Driver installation on Windows 2000 professional

Step 1



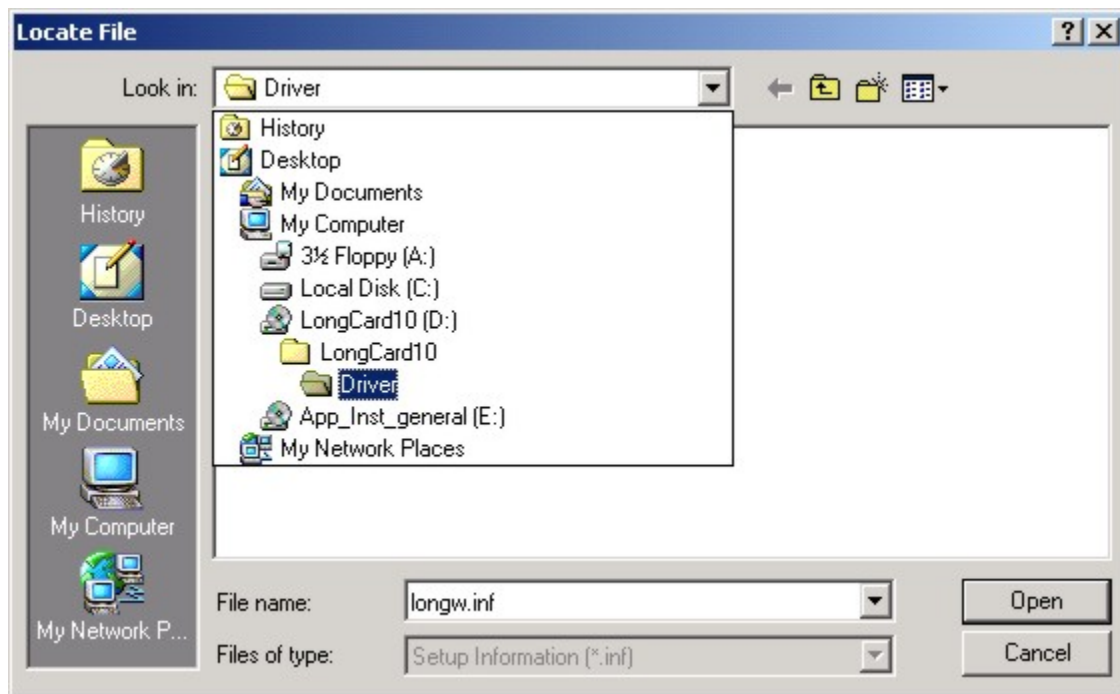
Step 2



Step 3



Step 4



Step 5

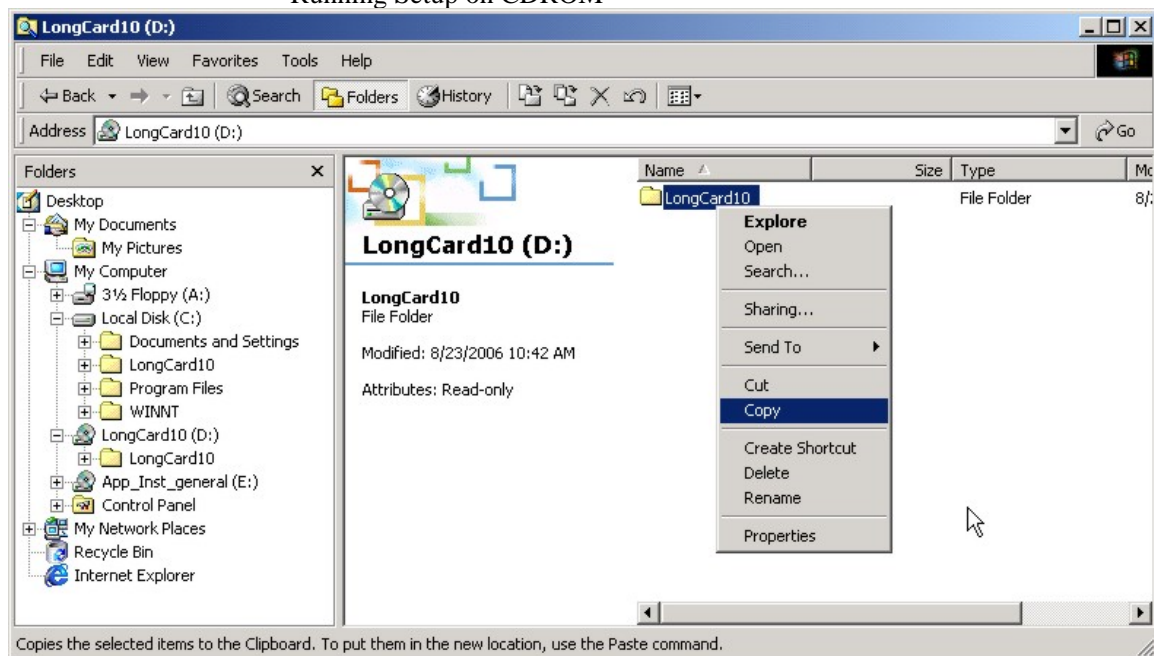


Step 6



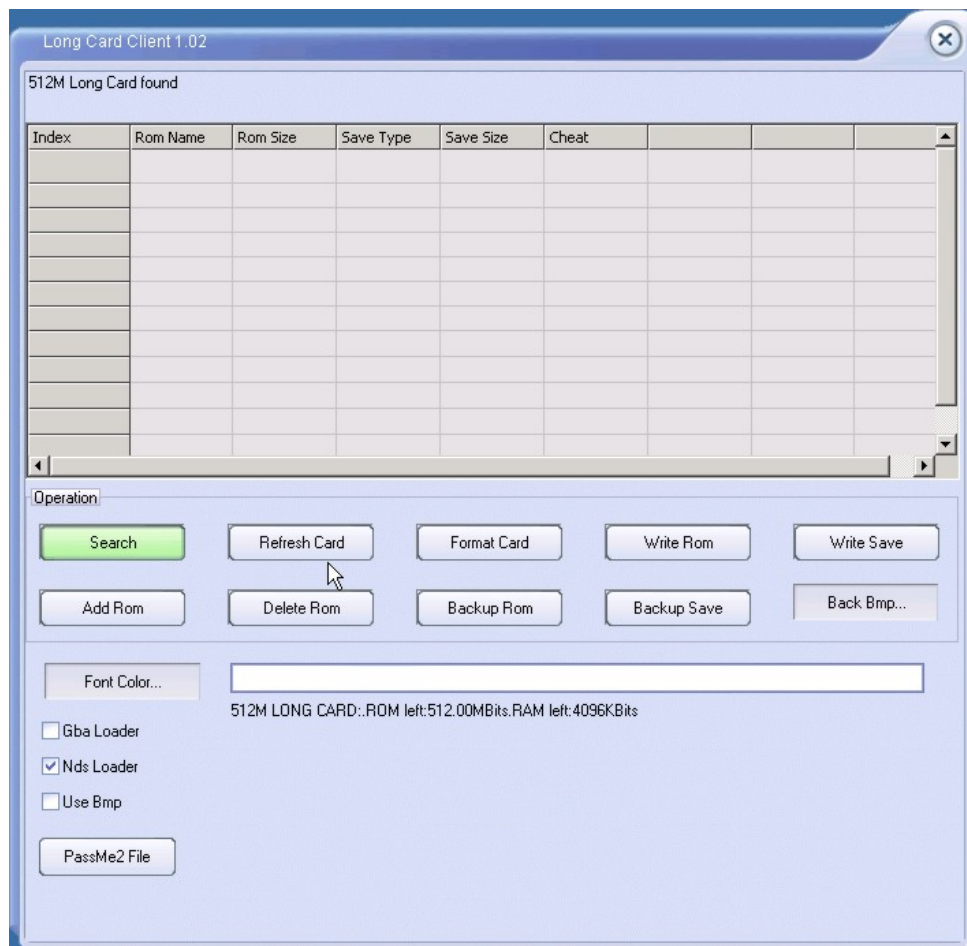
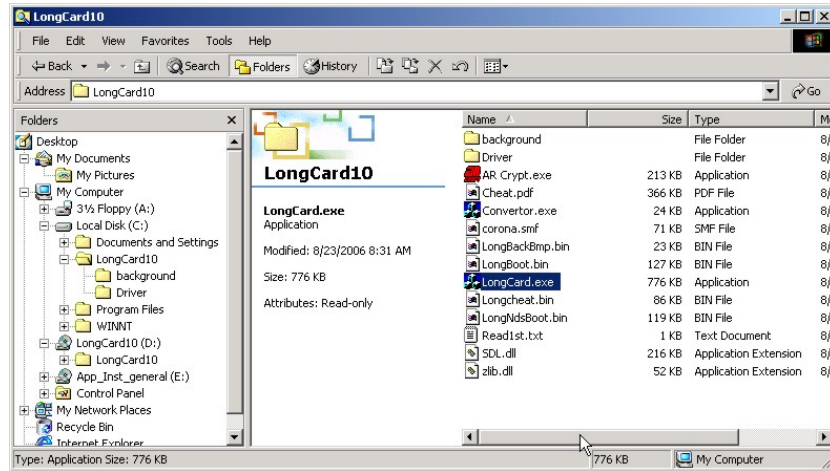
2.3. Install Long Card Client

Installation is very easy: Just Copy the LongCard10 directory on CDROM to your hard disk; or
Running Setup on CDROM



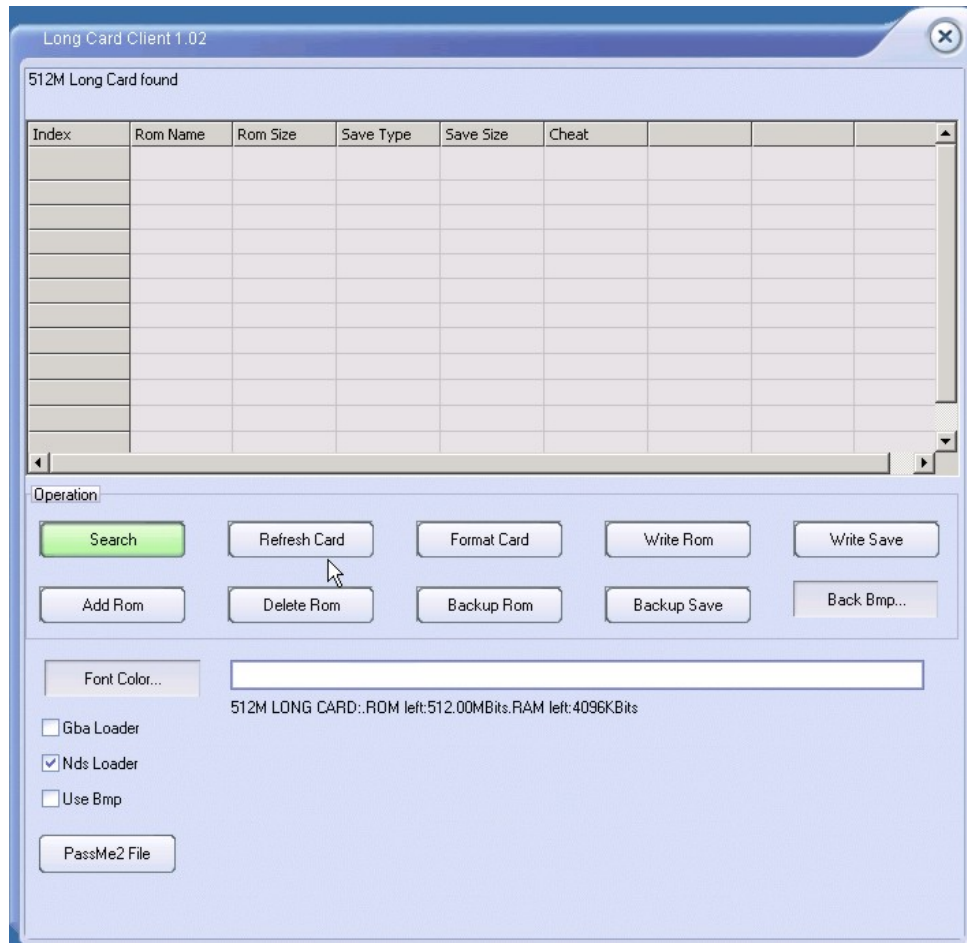
3. Software Operation Manual

3.1. Start the Long Card Client by double click longcard.exe



3.2. Search Long Card

After approximately 5 seconds, when LED on the long Card have been Green. You can press the **Search** and you can find the Card.



3.3. Add Rom

Press **Add ROM** to select the GBA/NDS Programs and add them to the **Rom Name list**. (The capacity sum of the selected programs should not exceed the capacity of the Long card).

3.4. Write Rom

LED on the Long Card would be red when the ROM's list are written. Don't plug off USB cable when lighten red, it will cause a fatal hardware damage to your card.

All the written ROM files will be black, **Read Card OK** will be showed on the window's bottom.

3.5. Unplug the Long card after the LED turn GREEN.

After writing Roms completed, the Led on the Long Card will turn green; At this case, you can unplug the Long Card

DO NOT UNPLUG the Long card when writing roms is in progress.

Make sure you disable BlackIce firewall or any other software that you think will interfere with the Long card writing or installing process - this is only a precaution.

3.6. Long Card Client Features

1) Click "[Search](#)". The software will look for the Long card that is connected to your PC. At the bottom of the screen the status of your card is displayed and at the top of the screen the card time is displayed. The table will list any information about the roms/titles that are in the Long card.

2) Click "[Add Rom](#)" to add a rom to the Long Card. Navigate to the roms on your computer. Select the rom you want to add and click "[open](#)" to add the rom to the table.

3) Once you have added all the roms they will be listed in the table with red text

4) Background

Please select the "Use bmp" first, then you need to choose the background which you like before add ROM. After that you could Press "Write Rom"

5) GBA Loader

Please choose "GBA Loader" when you want to add only GBA ROMs.

6) NDS Loader

Please choose "NDS Loader" when you want to add NDS ROMs or both GBA and NDS'ROMs.

Plug Long Card out when the writing is completed, plug it into your GBA/NDS/NDSL, you can at your ease execute your order!

Thank you very much for your purchase!