



**FLASH
ADVANCE
GEAR XTREME**

INSTALLATION GUIDE

Contents

I. Flash Advance Linker Xtreme

1. What is Flash Advance?
A short product introduction
2. Package Components
3. Name of parts
4. Additional accessories
5. Precautions
6. Installation

II. XtremeLink Software

1. What is Xtremelink?
2. Connecting FA Linker Xtreme and installing XtremeLink
3. Startup and Configuration of XtremeLink
4. The XtremeLink Status Bar
5. Read from Cart (downloading a GBA ROM)
6. Write to Cart (uploading a GBA ROM)
7. Save games (saving SRAM save game data)
8. Plugins

III. General

1. Troubleshooting
2. Weblinks

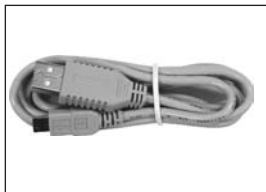
1. What is Flash Advance? A short product introduction

The Flash Advance Linker Xtreme is the first professional mass produced development and backup device for the Gameboy Advance handheld. Just like a Cradle for your Palm or other Handheld Computer, the Flash Advance Linker Xtreme is plugged into the printer port or USB port of your PC. Once connected, you can download games from a Gameboy Advance cartridge or upload a game (ROM) into one of the specially designed Flash Advance Xtreme cartridges.

2. Package Components of the Flash Advance Linker Xtreme



Flash Advance Linker Xtreme



USB Cable



Installation CD



sticker

3. Name of parts

Cartridge Port:

A Gameboy Advance Game or Flash Advance Xtreme cartridge can be inserted in here.

USB Port:

To connect the Flash Advance Linker Xtreme via USB to your PC

Parallel Port:

To connect the Flash Advance Linker Xtreme via parallel cable to your PC (the parallel cable is available as separate accessory)

Power Supply Port:

When connecting the Flash Advance Linker Xtreme via parallel port, a power supply will be required for operation (the power supply is available as separate accessory). Do not connect a power supply when using the Flash Advance Linker Xtreme in USB mode.

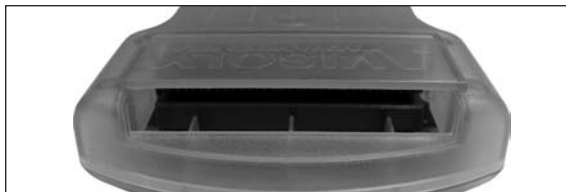
Status LED:

The Status LED shows the operation status of the Unit

Green LED: The Flash Advance Linker Xtreme is ready

Red LED: The Flash Advance Linker Xtreme is in read/write operation.

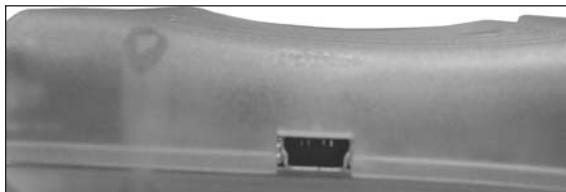
Do not remove or plug in any cartridge.



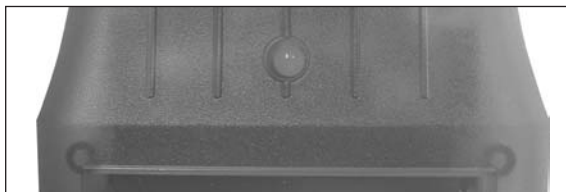
Cartridge Port



**Parallel Port,
Power Supply Port**



USB Port



Status LED

4. Additional accessories

The following Visoly Advanced Gear accessories are available separately and not included with the Flash Advance Linker Xtreme:

Flash Advance Card Xtreme (64M, 128M, 256M, 512M, 1024M)



With the Flash Advance Linker Xtreme you can upload any GBA ROM file into one of the specially designed Flash Advance Xtreme Cards. Xtreme Cards are available as 64M, 128M, 256M, 512M and 1024M* sized cards. For reference, a Gameboy Advance game has a size between 32M up to 256M. depending on the Flash Advance Xtreme Cartridge size, one or more games can be stored at the same time.

We recommend usage of the official Visoly Flash Cards only, compatibility with flash cards from other unlicensed companies cannot be guaranteed.

*Flash Advance Card Xtreme 1024M is scheduled for September 2002

DB25 Parallel Port connection Cable



The DB25 Parallel Port connection Cable is used to connect the Flash Advance Linker Xtreme to your PC via the parallel port mode.

Flash Advance Power Supply



The Flash Advance Power Supply is required when operating the Flash Advance Linker Xtreme in parallel port mode. We recommend usage of the official Visoly Flash Advance Power Supply only or a power supply with the following specifications: 9V DC, 500mA, Center Polarity Minus.

Please do not connect the Flash Advance Power Supply to your Flash Advance Linker Xtreme when operating in USB mode. This can lead to fail function and damage of the Flash Advance Linker Xtreme.

5. Precautions

Do not drop or apply impact. Shock is the major cause of breakdown.

Do not disassemble the Flash Advance Linker Xtreme.

Do not keep the Flash Advance Linker Xtreme in high temperatures or dispose in direct sunlight. Doing so may cause the shape and color of the Flash Advance Linker Xtreme to change.

Keep away from highly humid places.

When cleaning use a dry cloth to wipe the Flash Advance Linker Xtreme.

Make sure that the Flash Advance Linker Xtreme does not get in contact with chemicals such as benzene or thinner.

When leaving the Flash Advance Linker Xtreme not used for a long time, we recommend disconnecting it from your PC.

Do not connect a Power Supply to the Flash Advance Linker Xtreme when operating in USB mode. This can lead to fail function and damage of the Flash Advance Linker Xtreme.

Do not insert or remove any cartridge when the Flash Advance Linker Xtreme is in read/write mode (when the Status LED is flashing RED).

6. Installation

For Installation of the Flash Advance Linker Xtreme please refer to II.2 (Connecting FA Linker Xtreme and Installing XtremeLink)

II. XtremeLink Software

1. What is XtremeLink?

XtremeLink is a program specially designed for usage with the Flash Advance Linker Xtreme. For optimal performance, we recommend usage of this official software only.

XtremeLink allows you to

- Download a Gameboy Advance game from an original Gameboy Advance cartridge and store it to your PC as a so-called "ROM" file.
- Upload a Gameboy Advance game (ROM file) to any of the Visoly Flash Advance Xtreme cartridges.
- Upload and download SRAM data (save game data) from or to a Visoly Flash Advance Xtreme cartridge.
- Integrate further plugins to be released shortly into the official XtremeLink software.

Specifications required for XtremeLink are as follows

- Pentium 200MHz or higher
- 32MB RAM or higher
- Harddisc space of 50MB or more
- Windows 95/98/ME/2000/NT4/XP
- USB Port (or parallel port)

2. Connecting FA Linker Xtreme and Installing XtremeLink

For optimal product configuration, we recommend installing XtremeLink before connecting the Flash Advance Xtreme Linker to your PC.

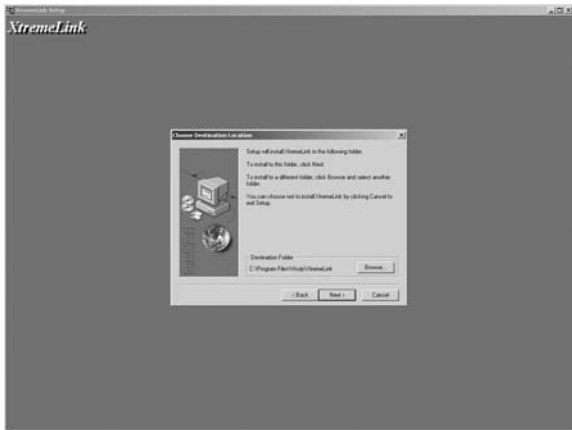
XtremeLink Software Installation

1) Insert the Advanced Gear Utility CD supplied with your Flash Advance Linker Xtreme into your CD-ROM, a menu will start automatically. In case that no program starts you can run the menu manually at 'CD-ROM:/autorun.exe'.



You may choose between the following options, select the first one to continue with the installation:

1. Install XtremeLink
2. Read Manual
3. Browse CD (there are many freeware roms stored on the Utility Disc with demos and games to start right away).
4. Visoly.com weblink (for latest product downloads)
5. Acrobat Reader (to download the Adobe Acrobat Reader)



Navigate through the installation steps and complete the installation of the XtremeLink Software. A "Visoly XtremeLink" folder will be created in your Windows Start Menu.

As next step you can now connect the Flash Advance Linker Xtreme to your PC through either the USB or the Parallel Port Mode:

1. Connecting in Parallel Port Mode

Connect the Visoly Power Supply to your Flash Advance Linker Xtreme and the DB25 Parallel Port Cable to your PC (both accessories are not included in the Flash Advance Linker Xtreme package). No further drivers need to be installed, you can start the XtremeLink software now.

2. Connecting in USB Mode



Connect the Flash Advance Linker Xtreme and USB port with the USB Cable. When connection with the PC is established, Windows will find a new hardware and the 'Add/Remove Hardware Wizard' runs automatically. Click 'next'



Click 'Search for the best driver for your device (Recommended)' and click 'Next'.



Select 'CD-ROM drive' and click 'Next'.



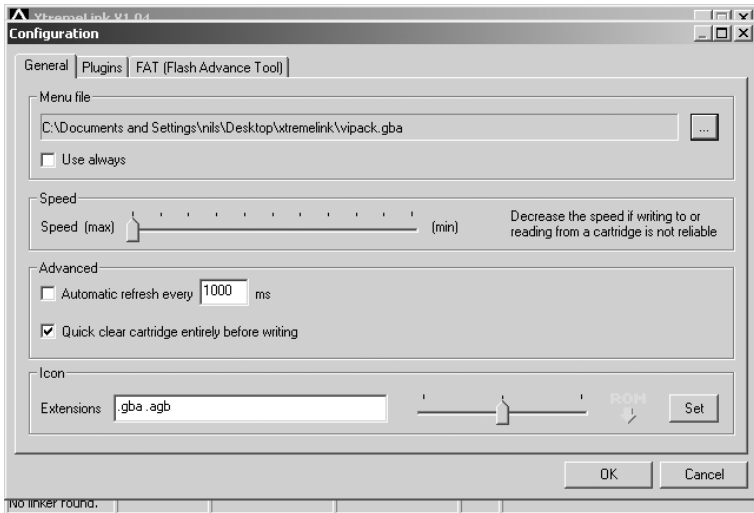
USB driver installation has completed. Click 'Finish' and end installation. After the system has rebooted, you can start the XtremeLink software.

3. Startup and Configuration of XtremeLink

When running the XtremeLink software, all Plugins will be loaded first which may take several seconds depending on the complexity of your installed Plugins.



You can now configure your software first, the following options are available



a) Menu file selection

This option is required when sending more than one ROM file to your Flash Advance Xtreme Card. If this file has been selected, a start up menu will appear on your Gameboy Advance, which allows you to chose which game to start. By selecting 'use always', the preload file will always be uploaded to the Flash Advance Xtreme Card.

b) Speed selection

This regulates the speed writing to any Flash Advance Xtreme Card. For users with a very fast PC it might be recommended to decrease the speed if reading or writing from a cartridge is not reliable.

c) Automatic Refresh

The Automatic Refresh will scan the Flash Advance Xtreme Linker and inserted cartridge in the given time interval. This option is disabled as default and only recommended for developers changing their Flash Cards frequently.

d) Quick clear cartridge entirely before writing

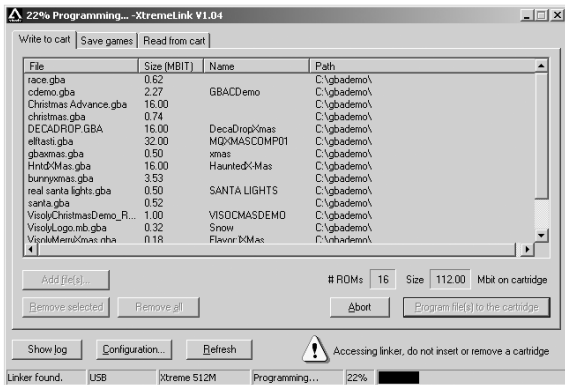
This option will clear the index of the Flash Advance Xtreme Card before writing to it. If this option is not selected, title names may appear in the start up menu, which have already been overwritten.

e) Icon

For easier navigation, you can set a certain icon to your Gameboy Advance rom extension. If you set an extension type, you can automatically program a certain ROM by simply double-clicking it.

4. The XtremeLink Status Bar

The Xtreme Link Status Bar indicates the following:



- If a linker has been found or not.
- Linker Mode (USB, Parallel SPP or Parallel EPP)
- Cartridge type present
- Progress Name Indicator
- Progress Status Indicator (Percentage)
- Progress Status Indicator (Graphical)

The 'Refresh' button can be clicked to re-scan the Flash Advance Xtreme Linker as well as the Cartridge used. This is recommended when changing the Cartridge or when no sufficient results were found.

5. Read from Cart (downloading a GBA ROM)

Using the Flash Advance Linker Xtreme, you can download the content of any Gameboy Advance cartridge and save them on your PC.

Insert any Gameboy Advance game cartridge into the Flash Advance Linker Xtreme cartridge port. If the XtremeLink software is already running, you may click 'Refresh' once and a "Standard ROM" will be found in the XtremeLink Status Bar.

Click on the 'Read from Cart' option, the Title name (short name) and a Game Code will be displayed in the Info screen.

Either use the Auto detect* function (or manually set the size of the ROM), then 'save cartridge to disk'.

The progress of the download will be displayed in the XtremeLink Status Bar.

*Auto detect always downloads a 128Mbit ROM and then tries to shorten the ROM as small as possible. Therefore using this option may take slightly longer, though it is highly recommended for any inexperienced user.

6. Write to Cart (uploading a GBA ROM)

Using the Flash Advance Linker Xtreme, you can upload any Gameboy Advance compatible 'ROM' file to your Flash Advance Xtreme Card. To make a quick start, several freeware ROM files are stored on the Visoly Advanced Gear Utility CD.

Insert any Visoly Flash Advance Xtreme Card into the Cartridge Port of the Flash Advance Linker Xtreme. If the XtremeLink software is already running, you may click 'Refresh' once and the Flash Card type will be displayed in the XtremeLink Status Bar.

Click on the 'Write to Cart' option.

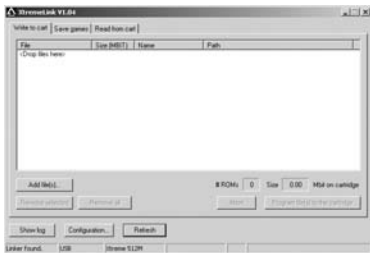
You can add 'ROM' files* into the list box using the 'Add file(s)' function or by simply dragging and dropping the files inside.

The file name, file size, game name as well as its full path will be indicated once a file has been added. Further the number of files plus its total Mbit size will be shown. You can now start the 'Program file(s) to the cartridge' function. Make sure to enable the Menu File in the configurations when uploading more than one ROM file to the Flash Advance Xtreme Card.

The Status Bar indicates the programming progress and the Flash Advance Xtreme Linker Status LED will flash RED during programming. Do not remove any cartridge during the read/write process to avoid fail functions. The 'Abort' function can be used to stop the writing process.



Read from Cart



Write to Cart

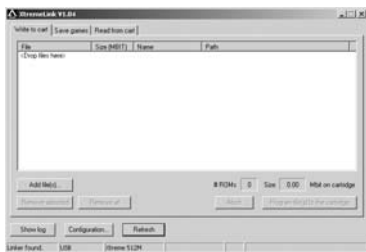
*Please note that only Gameboy Advance compatible ROM files can be loaded into the Flash Advance Xtreme Cards. This product does not support storage of any other ROM files (such as

7. Save games (saving SRAM save game data)

The Flash Advance Xtreme Cards allow you not only to store GBA rom files but also the save games appertaining to the game itself. Using the Flash Advance Xtreme Linker you can upload and download SRAM save game data to any Flash Advance Xtreme Card.

Insert any Visoly Flash Advance Xtreme Card into the Cartridge Port of the Flash Advance Linker Xtreme. If the XtremeLink software is already running, you may click 'Refresh' once and the Flash Card type will be displayed in the XtremeLink Status Bar.

Click on the 'Save games' option and the following window will appear:

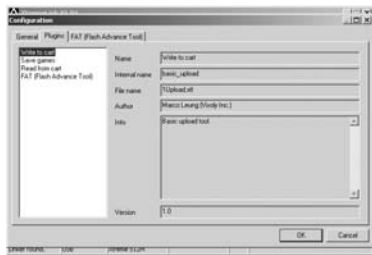


Save Games

You are now able to select the Save Game position on your Flash Advance Xtreme Card and either Read the save game data from the Flash Card to your harddrive or Write any save game data from your harddrive into the Card.

For advanced users and programmers, you can also show the hex snapshot of the selected save game data on your Flash Advance Xtreme Card.

8. Plugins



Plugins

XtremeLink software possesses a Plugin system, which allows users to easily upgrade and implement new Plugin functions. Plugins are saved as .XTL extension files in your XtremeLink system folder. The Plugin system also allows developers to create optional tools, a SDK (self development kit) can be found on the Visoly Advanced Gear Utility Disc (for advanced users only).

General Plugin information can be reviewed in the configuration menu. New Plugins will be available for download on www.visoly.com.

III. General

1. Troubleshooting

XtremeLink does not find a Linker

When connecting the Linker in Parallel Port Mode, make sure to use the correct power supply (9V DC, 500mA, center polarity negative). In USB Mode make sure to use NO power supply (the linker will be self-powered though the USB port) and have the drivers installed correctly.

Unplug the Flash Advance Linker Xtreme, restart the software and try the 'Refresh' button to rescan for the device.

XtremeLink does not find a Card or finds not the correct one

Make sure to have either a Visoly Flash Advance Xtreme or a standard Gameboy Advance game cartridge plugged into the Cartridge Port. Plug in the cartridge again and click the 'Refresh' button to rescan the hardware. Non-licensed Flash Cards sold under different brands may not be recognized correctly.

The Linker Status LED does not give any indication

Recheck the USB Cable connection and make sure to use the Power Supply only in the Parallel Port mode. The Flash Advance Linker Xtreme should not be used along with a Power Supply when connected via USB Port. In such case the Flash Advance Linker Xtreme may need a regeneration phase of about 30min to work again.

The Parallel Port writing speed is very slowly

XtremeLink and the Flash Advance Linker Xtreme support writing in SPP as well as EPP Parallel Port Mode. The EPP mode programs notably faster compared to the SPP mode. You can change your Parallel Port setting your PC Bios

Settings (under Integrated Peripherals).

A write error occurs when writing to cart

Try to adjust your writing speed settings in the configuration mode. For faster PCs it is recommended to decrease the writing speed.

A downloaded GBA ROM does not work after loading it into the Flash Card

Certain games require a patch to work because of a copy protection enabled. Check the supported weblinks to download such patches.

Multiple games are loaded into a Flash Card but no game selection menu appears

Make sure to enable the Menu function in the configuration screen. The preloader file must be loaded first, otherwise no menu will appear on our GBA that allows you to pick your title.

The Program File(s) function is not enabled when writing to cart

Recheck if your cartridge is recognized correctly. Further the function will be disabled when no sufficient space is left on the Flash Card to program the selected files. In such case remove one or more titles from the list.

Why can the Flash Card Xtreme hold GB or GBC games but not play them?

Basically any file type can be programmed on the Flash Advance Xtreme Cards. However when using the Flash Advance Card Xtreme, the Gameboy Advance handheld automatically starts in its GBA mode, which means GB or GBC ROM files cannot be supported.

2. Weblinks

Visoly Official Website: www.visoly.com

GBAEmu Emulation and Development News Site: www.gbaemu.com

Gameboy Advance Development: www.gbadev.org

Official Online Distributor: www.lik-sang.com

